



## Slade Pharmacy

Camberwell, Melbourne, VIC

Size of pharmacy: 109 m<sup>2</sup>

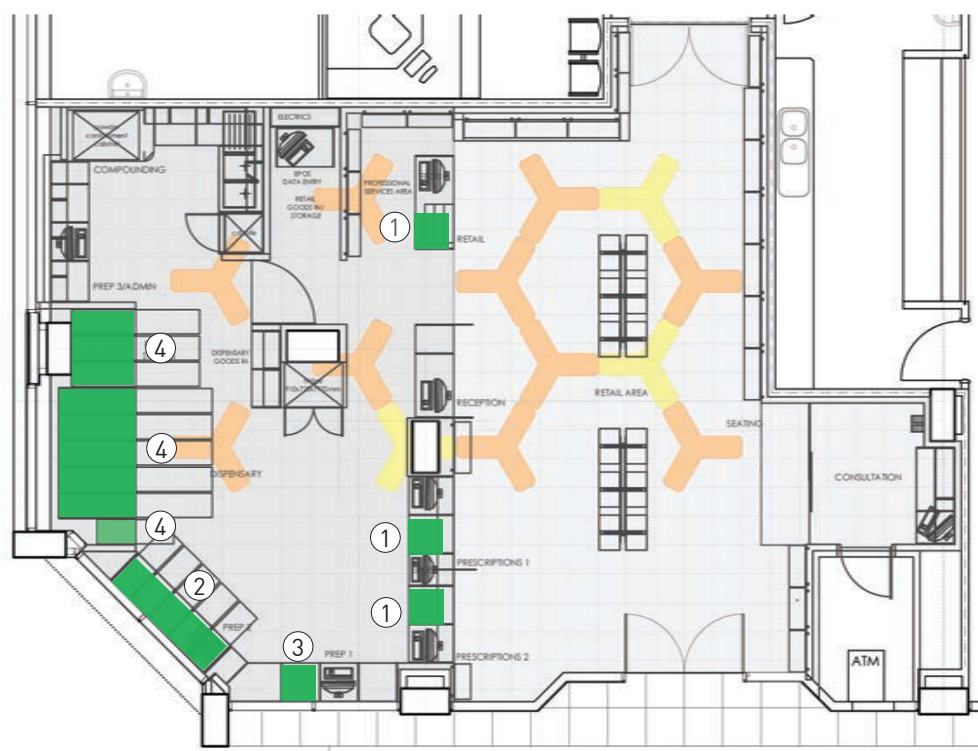
Size of dispensary: 50 m<sup>2</sup>

**FAMA® Solution:** FAMA K large capacity drawers and FAMA MX under bench drawers for slow moving items; FAMA MX under bench drawers for ultra fast moving items, scripts waiting to be collected and scheduled medication.

**FAMA® capacity:** Approx. 10,000 packages with additional under bench storage dependent on configuration and use.

**FAMA® Footprint:** Approx. 5 m<sup>2</sup>

**Start of operation:** October 2013



- ① FAMA® MX under bench drawers for storage of ultra-fast moving items
- ② Prepared ward stock stored in the FAMA® MX under bench drawers
- ③ Scripts waiting to be collected by patients – stored in FAMA® MX under bench drawers
- ④ High capacity FAMA® K drawers for compact storage of remaining pharmacy stock



“We were lucky to start with a blank canvas at Camberwell Slade Pharmacy and wanted to create a truly unique and modern looking pharmacy with an efficient work environment suited to both the hospital and retail aspects of the business. A collaboration between acclaimed UK designer Keith Anderson and the team at Willach has produced a state of the art pharmacy that presents a quality health service image to our customers and allows us to operate very efficiently.”

**Romi Onas**  
Managing Pharmacist

Slade Pharmacy, 888 Toorak Road, Camberwell, VIC, Australia



**Willach**

Pharmacy Solutions